

# Uploader Software Update Procedure

November 16, 2023

## Follow this procedure to upload software to a fixture that does not have a USB port.

1. Obtain new software files from the High End Systems products website:  
<https://www.etconnect.com/Products/Automated-Fixtures/>  
Find your product, click on the product's link, and click on SOFTWARE to reveal the current software version. There are several files within the .zip file. You will need to unzip the file you download. Uploader I uses the .gsd files. Uploader II can use either .gsd or .hyd files.
2. Remove the micro SD card from the upload unit and place it in the USB adapter.



3. Plug the adapter into the computer with the downloaded files. Copy the files to the USB drive. NOTE: If you have multiple fixture types to upload, you can organize the files by creating folders for the different fixture types and store the files in appropriately named folders (Frame2000, Beam1000 for example).
4. Place the micro SD card back in the upload unit. The gold fingers on the micro SD card should face toward the front panel.
5. Refer to the list on the following page before plugging the XLR connector from the upload unit into a fixture.

The following fixtures may be uploaded 5 units at a time , by connecting them together with DMX cables.

**! CAUTION:** *These fixtures **MUST** be powered down before connecting them to the upload unit. Please ensure that these fixtures are powered off at least 5 seconds prior to powering on and beginning an upload.*

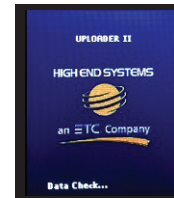
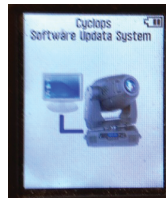
- |                |                  |
|----------------|------------------|
| Technospot     | Shape Shifter C1 |
| TechnoArc      | ShapeShifter W1  |
| SolaWash 19    | ShapeShifter C2  |
| SolaWash 37    | ShapeShifter W2  |
| SolaSpot       | SolaSpot Pro CMY |
| SolaFrame 1500 |                  |

All other fixtures may be uploaded 20 units at a time by connecting them together with DMX cables.

*These fixtures DO NOT need to be powered down before connecting the upload unit.*

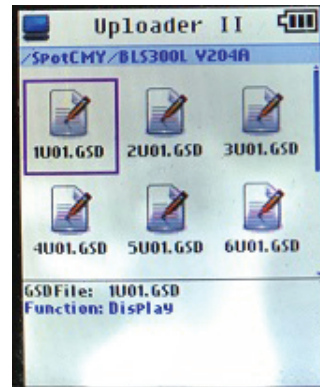
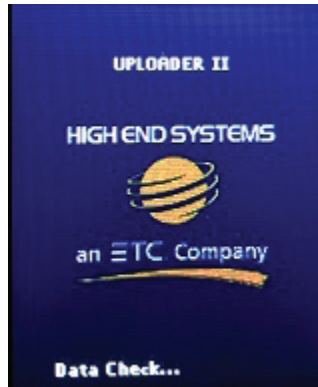
6. Uploader II has an option menu that allows for selection of the upload speed or mode. Refer to this chart for valid upload speeds per fixture type.







Uploader Power on Screen



Fixture	Uploader I	Uploader II			New Uploader II	
		Slow	Standard	Fast	Low Speed	Automatic
Technospot	X	X	X		X	
Technoarc	X	X	X		X	
SolaWash 19	X	X	X		X	X
SolaWash 37	X	X	X		X	X
Shapeshifter C1 (V100)		X			X	
Shapeshifter C1 (V105)	X	X	X	X	X	X
Shapeshifter W1 (V100)		X			X	
Shapeshifter W1 (V105)	X	X	X	X	X	X
Shapeshifter C2	X	X	X	X	X	X
Shapeshifter W2	X	X	X	X	X	X
SolaSpot	X	X	X		X	X
SolaSpot Pro CMY	X	X	X		X	X
SolaFrame 1500	X	X	X		X	X
SolaFrame 2000	X	X	X	X	X	X
SolaSpot 2000	X	X	X	X	X	X
SolaSpot 2000 High CRI	X	X	X	X	X	X
SolaHyBeam 2000	X	X	X	X	X	X
SolaWash 2000	X	X	X	X	X	X
SolaSpot 1000	X	X	X	X	X	X
SolaHyBeam 1000	X	X	X	X	X	X
SolaFrame 750	X	X	X	X	X	X
SolaFrame Theatre	X	X	X	X	X	X
HEX	X	X	X	X	X	X
QUAD	X	X	X	X	X	X
UNO	X	X	X	X	X	X
Ministar	X	X	X	X	X	X

7. Turn on the upload unit, and press the MODE/ESC button to display the menu screen. If you have multiple folders available, select the correct folder for the fixture type that you would like to upload.



8. Power up the fixtures. They will display “Long Wait.” If the fixture requires a power cycle before the upload, you will have 30 seconds to start the upload, otherwise the fixture will boot normally. If the fixture does not require a power cycle before the upload, simply move on to step #9.
9. On the upload unit, scroll to the .gsd or .hyd software file you wish to update and press the  button. You can upload the software files in any order.
  - a. If you select a .gsd file on Uploader I, you will be prompted to enter a password. Use the Up, Down, Left and Right arrow buttons on the upload module to enter the password, which is 777777. Press the  button after typing the password. Select Yes, and press the  button to start the upload.
  - b. If you select .gsd or .hyd files on Uploader II, you will not be prompted to enter a password. Simply press the  button to start the upload.
  - c. During the upload, the fixture display will show a status bar indicating upload progress.
10. When the upload is complete you will be asked if you want to upload another module.
  - a. If you are using the .gsd files, select YES and press the  button to continue, until all modules are uploaded. If you are using the .hyd files, all modules will be uploaded automatically.
  - b. After uploading the last module, chose NO and press the  button to reset the fixture.
  - c. NOTE: Always upload all modules in the fixture. Failure to do so may result in suboptimal fixture performance.
11. Unplug the uploader from the fixture, and turn off the upload unit.

For further information or technical assistance, please contact customer service directly, or e-mail - support@highend.com

**High End Systems**  
 2105 Gracy Farms Lane  
 Austin, TX 78758 USA

*Office and Customer Service:* 512-836-2242  
*Fax:* 512-837-5290  
*Toll Free:* 800-890-8989